



2 Bedrooms | 1 Bathroom | 2 Reception Rooms
Hamsey Green Gardens | Warlingham | CR6 9RS
£400,000

LOFT

Hamsey Green Gardens | Warlingham | CR6 9RS £400,000

- Spacious mid-terrace home with driveway
- Through lounge/diner with open plan kitchen space
- Double doors leading to the vast rear garden
- Two double bedrooms to the first floor
- Modern fully tiled bathroom with walk-in shower
- Only a 15 minute walk from the sought after Warlingham Green, with plenty of shops, restaurants and pubs
- Plenty of green spaces surrounding, including Hamsey Green, and great schools close by

Ground Floor

Hallway

Reception

Room/Kitchen

26'2 x 15'0 (7.98m x 4.57m)

First Floor

Landing

Bedroom

15'0 x 10'3 (4.57m x 3.12m)

Bedroom

10'3 x 9'3 (3.12m x 2.82m)

Bathroom

Outside

Driveway

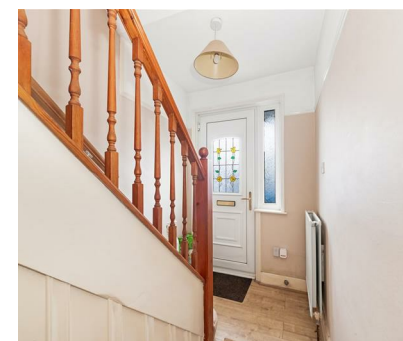
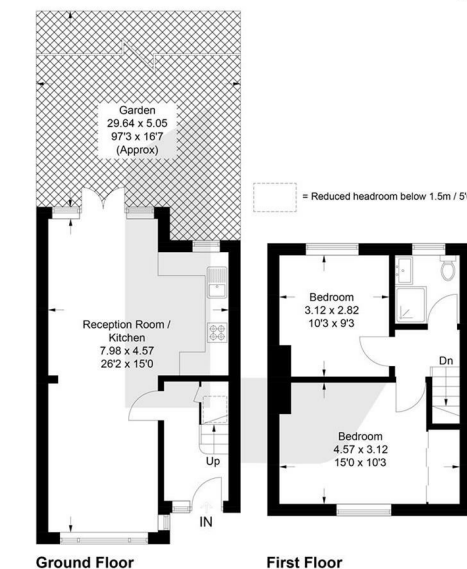
Rear Garden

97'3 x 16'7 (29.64m x 5.05m)



Hamsey Green Gardens, CR6

Approximate Gross Internal Area = 63.3 sq m / 681 sq ft



EPC Rating: C

23a High Street
Purley
Surrey
CR8 2AF
0208 660 8070
hello@loft-estates.co.uk